



Book Aid & Preservation Foundation

No. (55), Baho Road (Corner of Baho & Ahlone Rd.), Ahlone Township (Near Eugenia Restaurant), Yangon, Myanmar.

Tel: (951) 212 409, 221 271, 214 708, (959) 5092680, Fax: (951) 221 271

E-mail: info@myanmarbook.com

Website: www.MyanmarBookFoundation.org

9th June 2015

Daw Aung San Suu Kyi

Chairperson

Daw Khin Kyi Foundation

Subject : PROGRESS REPORT OF MOBILE LIBRARY FOR THE MONTH OF MAY '15

I am pleased to submit our progress report of mobile library operation in **Kaw Hmu, Nay Pyi Taw and Kalaw** for the month of May 2015.

I. Kaw Hmu Mobile Library Operation

I.A Membership

Below is our membership status:

Big Bus	- 5,682
Small Bus	- 5,843
Central Lib	- 3,892
Sub-Centre	- <u>996</u>
Total	16,413

Michelle Yeoh had visited Kaw Hmu library.

Kaw Hmu had reached over 220,000 checkouts in 22 months.

Kaw Hmu had reached over 16,000 membership

Nay Pyi Taw had reached to over 140,000 in circulation in just 12 months.

Membership rate was 3% increase comparing with April '15. Please see below chart which shows the current membership status as at end of May '15.

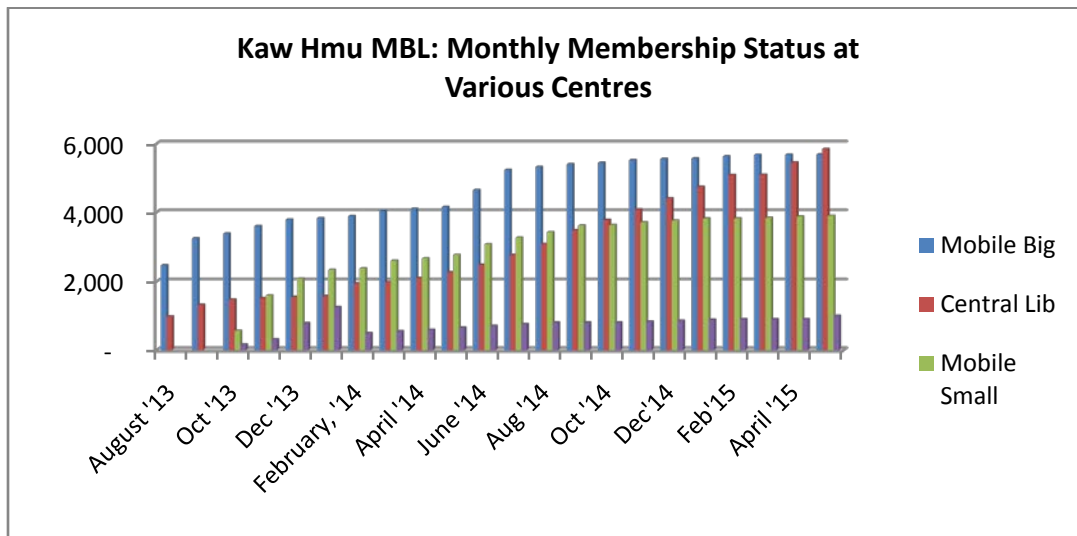
I.B Circulation

At present, (22,190) books have been catalogued and are in circulation in Kaw Hmu. Circulation of the books during the month of May 2015 is shown as follows:

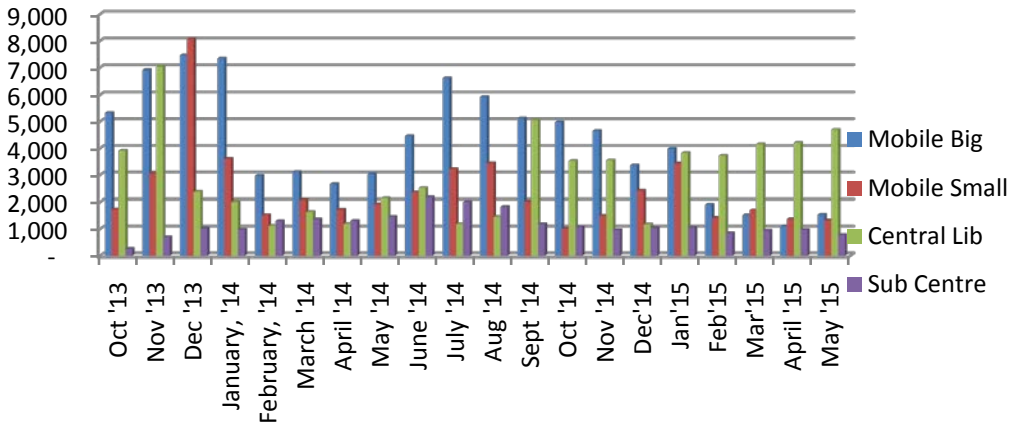
- 1. Mobile Big Bus : 1,538
- 2. Mobile Small Bus : 1,324
- 3. Central Library : 4,696
- 4. Sub-centre : 781
- Total : 8,339**

Therefore, there is 9% increase in circulation comparing with April 2015 in Kaw Hmu. Kaw Hmu had reached to 222,927 in total circulation from July 2013 to May 2015 (in 22 months time)

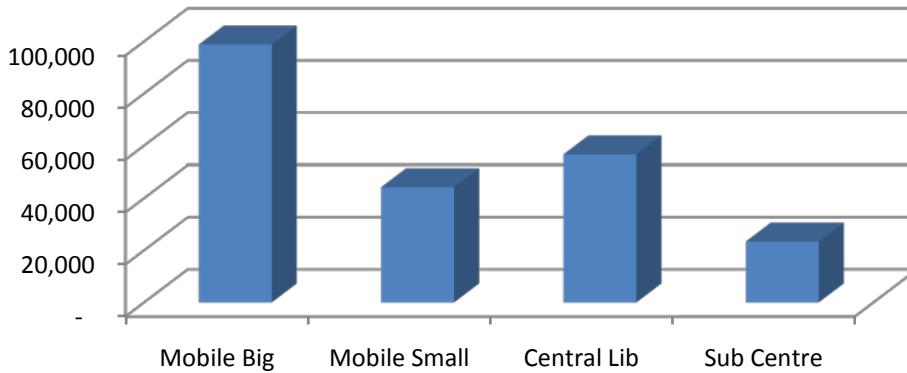
* Update Villages List * KawHmu		
MBL - Bus 1	20	Villages
MBL - Bus 2	14	Villages
Sub-Centre	13	Villages
Total -	47	Villages



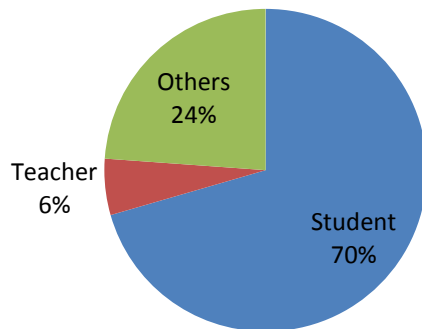
Kaw Hmu MBL: Monthly Circulation Status at Various Centres for Past One Year



Accumulated Circulation Status at Various Centre



Kaw Hmu MBL: Percentage of Type of Membership



II. Nay Pyi Taw Mobile Library Operation

Nay Pyi Taw operation is running well in May 2015 too. At present, (15,257) books has been catalogued and are in circulation in Nay Pyi Taw .

II.A Membership

Below is Membership Status as at end of May 2015 in Nay Pyi Taw. Current membership status is as follows:

1. Mobile Big : 7,729
2. Mobile Small: 2,974
- Grand Total : 10,703**

Detail breakdown of the user status is as follows:

1. Students : 6,420
2. Teacher : 177
3. Community : 4,106
- Total : 10,703**

There is 1% increase in membership number comparing with March 2015.

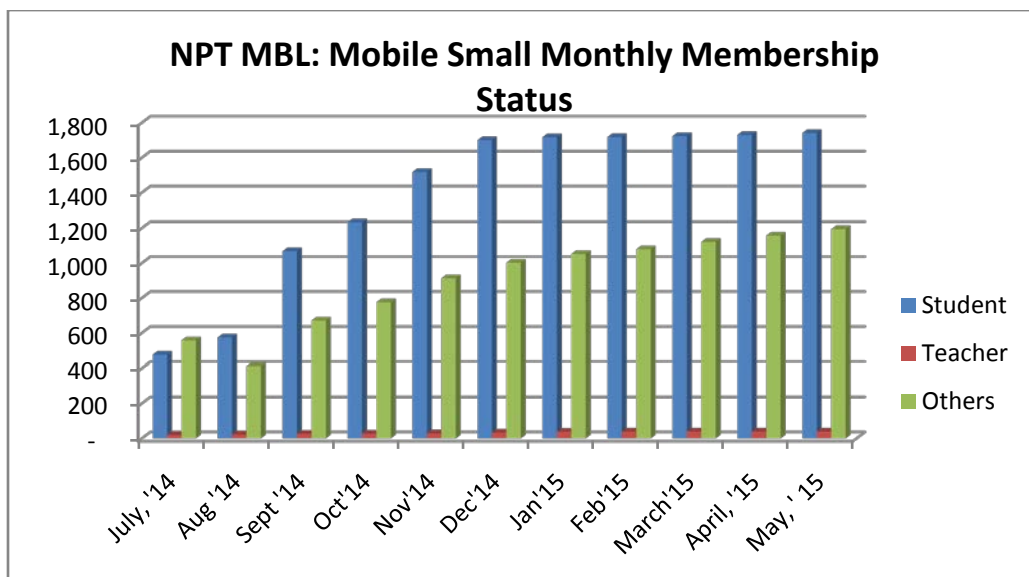
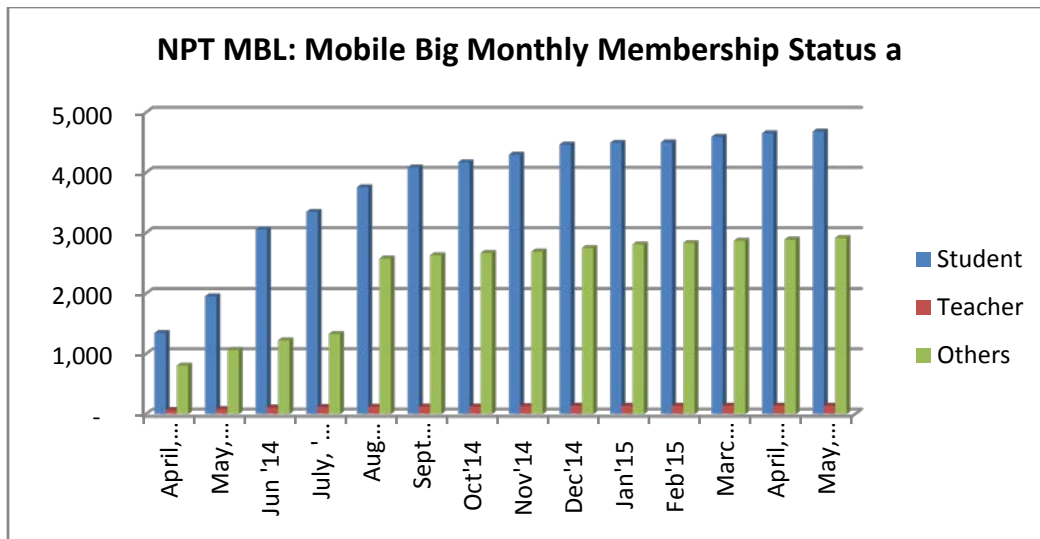
II.B Circulation

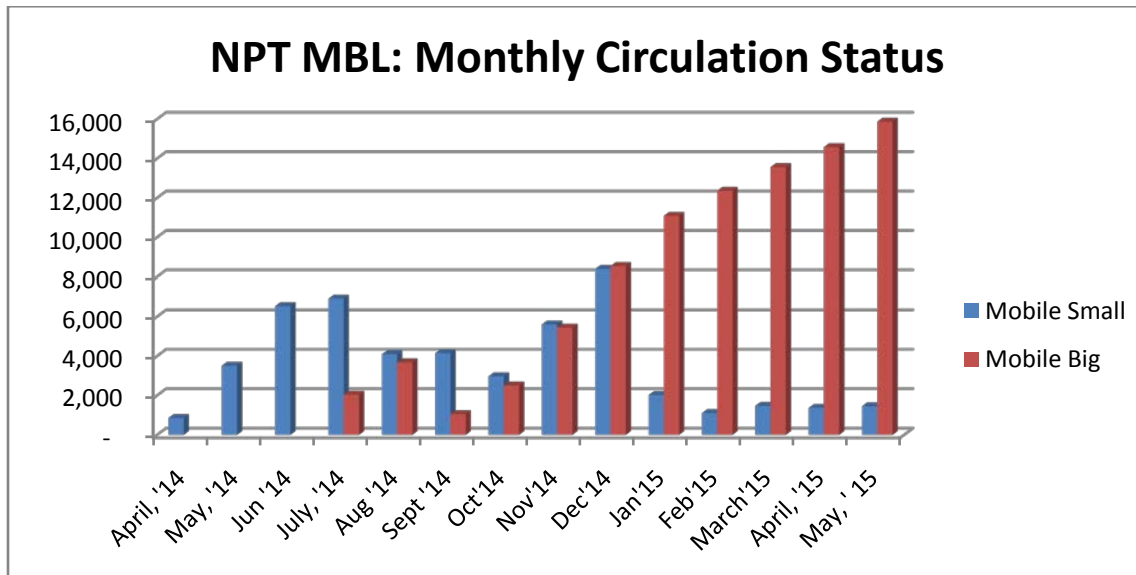
Over 15,257 books in stock in Nay Pyi Taw Office. 17,324 books were checkout during the month of May 2015. Therefore, there is 9% increase in circulation comparing with April '15. Please note that number of checkout is more than number of stocks because some books are checkout more than once in one month. In order words, books are well used. We are reaching to 141,191 in total circulation in just 14 months.

We are providing our service to 48 villages via the two mobile buses. We now have 3 sub-centres in Nay Pyi Taw.

Update Villages	
NPT	25 Villages
Pyinmana	20 Villages
Sub Center	3
	48 Villages

* Sub Center Report *	
Membership	36
Books	700





III. Kalaw Mobile Library Operation

There was a flood in Kalaw and about (20) books were damaged due to flooding into the office. But, everything has been fixed. 7,194 books are in circulation. We are reaching to (42) places which include libraries, community gathering places and offices also. Membership is increased by 9% comparing with March '15.

III.A Membership

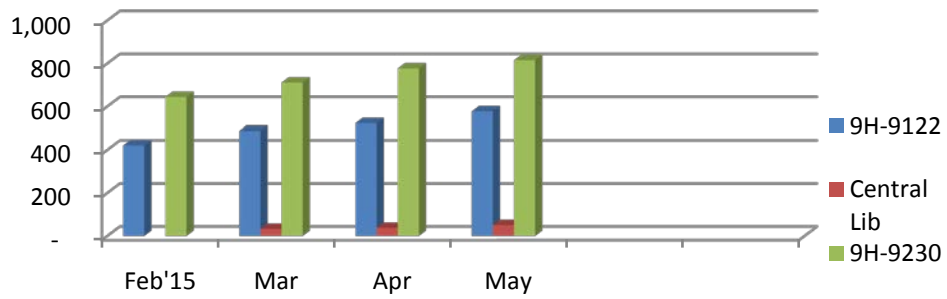
- | | |
|--------------------|-------------|
| 1. Mazda Pickup 1 | : 577 |
| 2. Mazda Pickup 2 | : 815 |
| 3. Central Library | : <u>51</u> |
| Grand Total | : 1,443 |

III.B Circulation

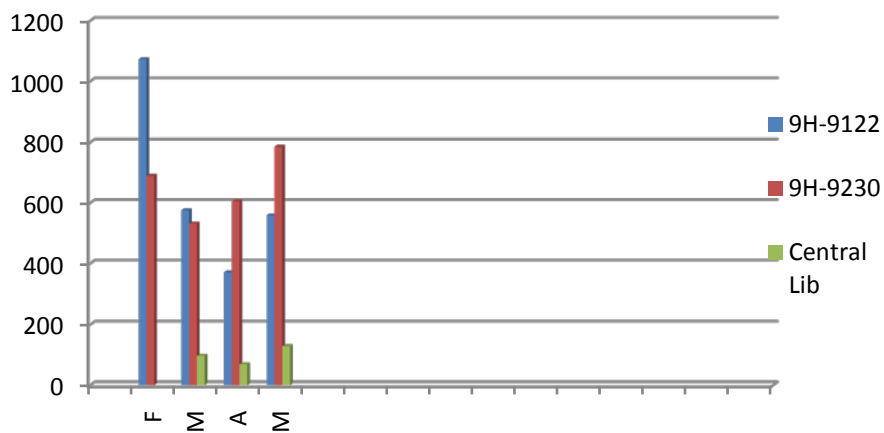
- | | |
|--------------------|--------------|
| 1. Pickup 1 | : 559 |
| 2. Pickup 2 | : 786 |
| 3. Central Library | : <u>129</u> |
| Grand Total | : 1,474 |

There is 8% increase in membership and 41% increase in circulation. Total of 5,488 books have been checked out from February to May 2015.

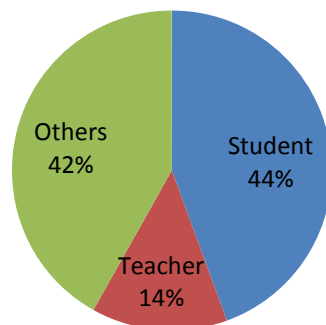
KaLaw MBL: Monthly Membership Status at Various Centres



KaLaw MBL: Monthly Circulation Status at Various Centres for Past One Year



KaLaw MBL: Percentage of Type of Membership



Students usage in Kalaw will be increased once the schools reopen from June '15 onwards.

IV. Other Activities

IV a. Natmauk Mobile Library

All the necessary preparations have been made and training were conducted in Kaw Hmu. Two pickups from Mazda will be received in one week time. Once the pickups receive, we can fix the shelves and pickup roof in one week time. We think we can launch the operation by third week of June. All the schedules are drawn by our staffs already.

IV b. Computer Training Classes

7th batch of training class was successfully finished. Total of (420) people have graduated from the centre. At present, we are planning to introduce intermediate and advance level of training as many have received basic training already.

In conclusion, the MBL project in both Kaw Hmu, Nay Pyi Taw and Kalaw are operating smoothly and successfully.

With best regards,



Dr. Thant Thaw Kaung
Project Director
Mobile Library Project
Daw Khin Kyi Foundation